



Saint Stephen's Annual Giving Campaign



YOUR GIFT WILL MAKE A SIGNIFICANT IMPACT

In 2010, Saint Stephen's established a *Family of Funds* as part of our tradition of annual giving to the school. *The Family of Funds* offers you the opportunity to match your personal philanthropic preferences to Saint Stephen's operating budget. We believe you want to know exactly what your gifts accomplish and how your gifts will be directed to the school's expenses. To accomplish this goal, the *Family of Funds* now includes:

- **Academic Programs Fund**

Teachers make a classroom. Saint Stephen's strives to provide our teachers with the materials they need to bring their subject matter to life. This fund supports everything from classroom supplies and service projects to multi-media content for the classroom.

- **Physical Education & Athletics Fund**

The coaches at Saint Stephen's are educators and they know our student athletes well. Your support will enable coaches' and players' continued commitment to teamwork, sportsmanship, respect for self and others, and personal growth. With over 40 inter-scholastic, competitive sports teams and an active physical education program, investment in this fund complements the Saint Stephen's lifestyle that promotes healthy bodies and minds.

- **Faculty Fund**

Contributions to the Faculty Fund will support faculty salaries, workshops, training, and continuing education. Your support will help us recruit and retain great teachers. Teachers are the heart of an exceptional Saint Stephen's education and they need your support.

- **Fine Arts Fund**

On a canvas, in a concert hall, or on stage, burgeoning talented artists are inspired and cultivated at Saint Stephen's. The arts are an integral part of a complete education. Investments in the Fine Arts Fund will provide for advanced artistic opportunities to our students.

- **Technology Fund**

The exceptional students at Saint Stephen's deserve access to equally exceptional technological tools. Investment in this fund results in an advanced technological landscape for our students to roam in their quest for knowledge and global communication.

- **Area of Most Need Fund**

This fund is designed to enable the Board of Trustees to apply your gifts where they are needed most — insuring that Saint Stephen's always has the people and programs necessary to meet the needs of our talented students.

Tuition
Basic Operating
Expenses

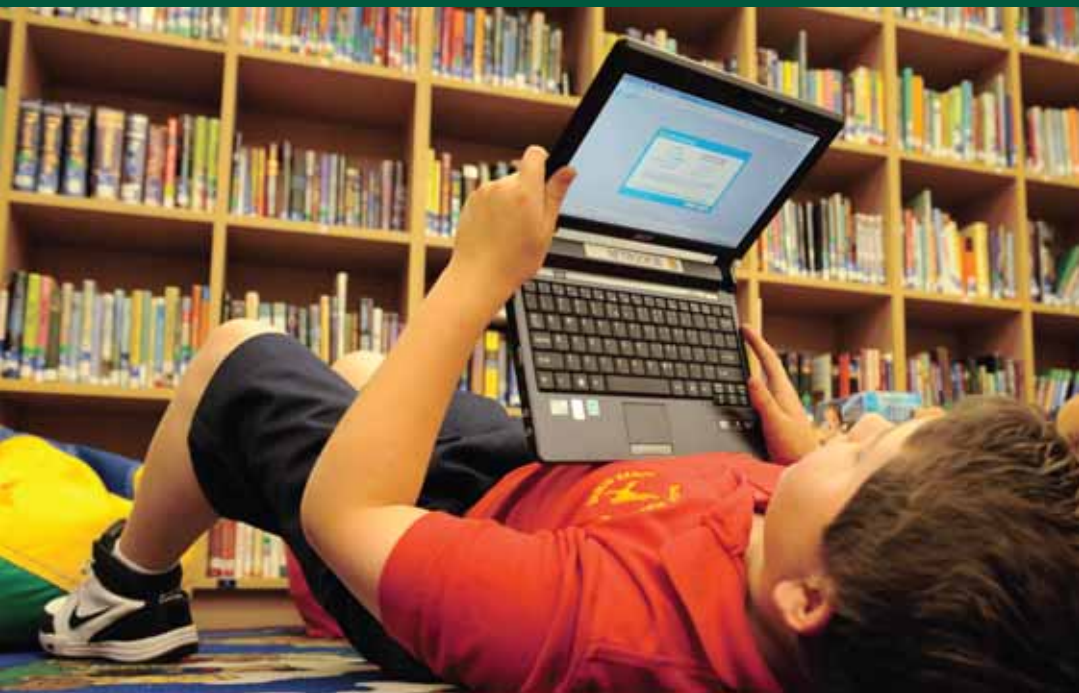


The Saint's Fund
Academic Programs,
Physical Education
& Athletics,
Faculty, Fine Arts,
Technology,
Area of Most Need



The Saint Stephen's
Experience
Superior Faculty,
Challenging Curriculum,
Extraordinary Facilities

**YOUR
INVESTMENT
IN THE SAINT'S
FUND IS AN
INVESTMENT
IN OUR FUTURE**





100% of our Board of Trustees, faculty, and staff make a gift to The Saint's Fund. We are asking everyone — all of our families, alumni, and friends — to participate at whatever level is appropriate for you.

100%



The Mission of Saint Stephen's Episcopal School is to:

- Provide a superior academic program which prepares each student for a college or university compatible with the individual's academic ability, interests, and needs.
- Instill in each student a love of learning, an active respect for all members of the school community, and a fundamental sense of integrity.
- Provide a nurturing environment which values independence and self-worth, physical health, spiritual awareness, and responsible global citizenship.

The Mission of The Saint's Fund is to:

- Provide the critical margin of excellence that enables Saint Stephen's to offer the exceptional experiences that will help our students reach their full potential.

EVERY GIFT COUNTS

Whatever the amount, every single gift counts and has a positive impact on the school! When 100% of parents, alumni, grandparents, Board of Trustees, faculty/staff, and friends of Saint Stephen's make a gift to The Saint's Fund it affirms their commitment to the school and the importance they place on investing in each student's education. 100% participation also helps Saint Stephen's procure grant funding. One of the critical measurements for receiving a grant is the participation rate in our annual giving campaign; strong participation strengthens our position to receive the grant award.

Consider these facts:

- Based on NAIS standards, annual giving revenue should generate 10% of the school's budget, which for Saint Stephen's is approximately \$1,400 per student.
- An annual gift of \$2,500 provides annual support equal to a \$50,000 endowment!

**Now it's your turn:
Get into the spirit and get involved**



**BECAUSE
EVERY
SAINT STEPHEN'S
STUDENT
DESERVES 100%
OF OUR BEST**



Thanks for getting into the spirit and giving to The Saint's Fund. Please complete both sides of this card and mail it to:
Saint Stephen's Episcopal School, Development Office
315 Forty-First Street West | Bradenton, FL 34209

I would like to **Get into the Spirit** by supporting The Saint's Fund at the following level:

- Circle of Excellence \$20,000 and up
- Founder's Circle \$10,000 - \$19,999
- Head of School Circle \$2,500 - \$9,999
- Falcon Circle \$1,500 - \$2,499
- Green & Gold Circle \$500 - \$1,499
- Friend Circle \$1 - \$499

Further, please attribute my above gift to the following fund:

- Academic Programs Fund
- Physical Education & Athletics Fund
- Area of Most Need Fund
- Fine Arts Fund
- Technology Fund
- Faculty Fund

The fund areas above support Saint Stephen's Episcopal School's operating budget. The Board of Trustees retains the discretion to use the funds to support the School's general operations should contributions received for a particular fund exceed the expenditure limits approved by the Board for each area.

Get into the Spirit!

THE SAINT'S FUND

A secure online donation to The Saint's Fund can be made at <https://www.saintstephens.org/saintsfund>

A secure online donation to The Saint's Fund can be made at <https://www.saintstephens.org/saintsfund>

NAME _____

PHONE (_____) _____

ADDRESS _____

CITY _____

STATE, ZIP _____

EMAIL ADDRESS _____

AMOUNT OF GIFT/PLEDGE \$ _____

This is a pledge for future payments.* Please bill me:

Monthly Quarterly, beginning on _____

I have enclosed a check made payable to Saint Stephen's Episcopal School

Please charge my credit card (Visa, Mastercard, Discover, American Express)

NAME ON CARD _____

CARD NUMBER: _____

CARD EXP. DATE ____/____

BILLING ADDRESS _____

CITY, STATE, ZIP _____

SIGNATURE: _____

This is a memorial/tribute gift in honor of:

NAME: _____

Please send a tribute card to:

NAME _____

ADDRESS _____

CITY, STATE, ZIP _____

My employer has a matching gift program (please include matching gift form)

I have questions about giving gifts of stock, please contact me

I would like to leave my legacy at Saint Stephen's, please contact me about a Planned Gift

I would like my gift to remain anonymous

*Please plan to complete all payments on pledges by June 30th.

All gifts to Saint Stephen's Episcopal School are tax deductible as allowed by law.



Get into the Spirit!

THE SAINT'S FUND

THE SAINT'S FUND | LEVELS OF GIVING

Circle of Excellence	\$20,000 and up
Founder's Circle	\$10,000 – \$19,999
Head of School Circle	\$2,500 – \$9,999
Falcon Circle	\$1,500 – \$2,499
Green & Gold Circle	\$500– \$1,499
Friend Circle	\$1– \$499



Saint Stephen's Episcopal School | 315 Forty-First Street West | Bradenton, FL 34209
(941) 746-2121 | Fax: (941) 746-5699
<https://www.saintstephens.org/saintsfund>